

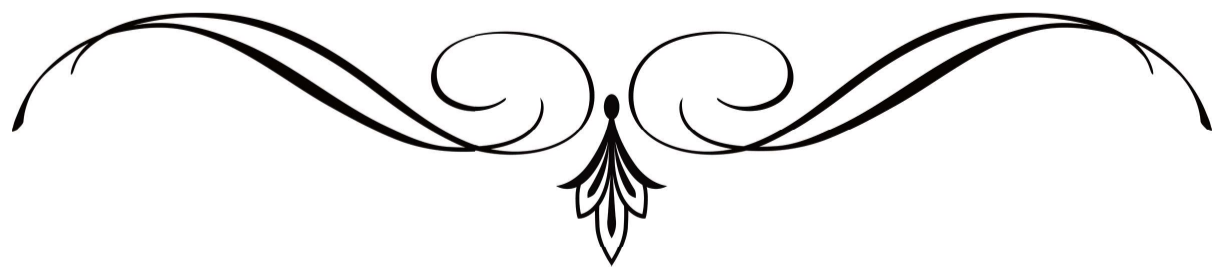
*A Psychotic's World Reading*

*For horn, vibraphone, tubular bells, wind  
chimes, finger cymbals, tam-tam, bass drum,  
and timpani, piano, string section (organ), solo  
cello and soprano*

*Haining Dou*

*December 2023*

*In the Royal Danish Academy of music*



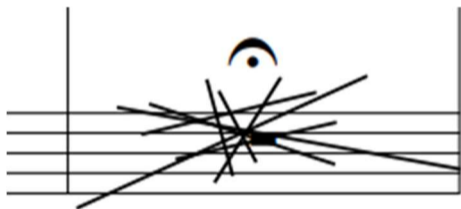
After a solo European journey spanning over 70 days, I traversed dozens of countries and regions across the continent, visiting over fifty cities and towns. I witnessed countless historical artifacts spanning thousands of years, including paintings, sculptures, architecture, musical heritage, and homes of great figures—many of which had only existed in my childhood memories within history, geography, or art textbooks. From the polar mountains and wildlife of Svalbard in the Arctic to the grand remnants of the Roman Empire; from the somber and dark Jewish memorials of World War II to the vibrant democracy at the headquarters of the European Union; from the dazzling, opulent palaces of Paris to the wild Flamenco dancers on the streets of Seville... all deeply and profoundly impacted my soul. I couldn't suppress my curiosity about the world and my greed for beautiful things. To me, they were like an endless book, offering delicious sustenance for my artistic life as long as I greedily devoured them, constantly revitalizing my art and generating new musical materials.

This composition consists of four movements. Its basic arrangement includes a conductor, a French horn, five percussionists playing the vibraphone, tubular bells, wind chimes (glass or metal), finger cymbals, tam-tam, bass drum, and timpani, a piano, and a string section. In the first movement, a female soprano performs briefly, and in the second, a solo cellist plays a prominent role (similar to a concerto), exiting the stage after this movement. Due to premiere constraints, the string section is replaced by a small pipe organ chosen for its blending tones—mimicking woodwinds or vocals but not overpowering or grand. Both the strings and the organ play supportive roles, careful not to overshadow others.

The division of labor among the five percussionists is: the first plays the vibraphone, the second the tubular bells, the third the wind chimes and finger cymbals, the fourth the tam-tam and bass drum, and the fifth the timpani.

In scoring, I created a 'with piano' version for each instrument, facilitating coordination among musicians in parts with unstable rhythms (including frequent rubato and tempo changes) and numerous rest measures, ensuring they stay in sync without feeling lost. This significantly reduces the pressure on the conductor and musicians.

Special percussion notation:



1. Play the wind chimes randomly.



2. Play the drum surface with fingers.



3. Rub the surface in circles with a drumstick.



4. Use a cello bow to play the edges of the vibraphone.

Regarding the use of sustain pedals for the piano and vibraphone, I impose few restrictions, except for detailed pedal markings in the first movement. Particularly for the vibraphone, the pedal should be used most of the time, with musicians controlling the harmonic effects based on the musical direction.

# A Psychotic's World Reading

## I. 妈妈 Mama...

Grave  $\text{♩} = \text{c.}24$  [ $\text{♩} = \text{c.}48$ ]

*Please play with a sense of mystery. The rhythm should not be too rigid; musicians should allow the rhythm to have some flexibility.*

Horn in F

*In this piece, unless specifically indicated, please do not mute. Let the sustain fade naturally.*

Vibraphone

Tubular Bells

Chimes

*In this piece, unless specifically indicated, please do not mute. Let the sustain fade naturally.*

Finger Cymbals

Tam-tam

Bass Drum

Timpani

Soprano

*Please try to touch the keys gently, as if brushing the strings with a feather.*

Piano

Violin I

Violin II

Viola

Cello

Double Bass



*rit.*

9

Hn.

Vib.

T.B.

Chm.

*f*

*p*

*Play randomly and chaotically.*

9

F. Cym.

T.T

B. Dr.

Timp.

9

S

Pno.

*dim.*

*mf*

*pp*

15<sup>ma</sup>

*Leg.*

*\* Leg.*

9

Vln. I

Vln. II

Vla.

Vc.

D.B.

*morendo*

*morendo*

*morendo*

*morendo*

*p*





Hn. <sup>21</sup> *p*

Vib. <sup>21</sup> *p*

T.B.

Chm. *p*

F. Cym. *p*

T.T. *mp*

B. Dr.

Timp.

S

At this moment, the orchestra should be centered around the Piano, with the rhythm based on its variations. And the Piano must have a noticeable rubato rhythm change in this section.

Pno. *mf*

Vln. I *mf*

Vln. II *mf*

Vla. *mf*

Vc. *mf*

D.B. *mf*







29

Hn. *mp*

Vib. *p*

T.B. *mf*

Chm.

F. Cym.

T.T. *mf* *f* *mf*

B. Dr. *mf* *f* *mf*

Timp. *p*

S  
ah

Pno. *8va* *8va*  
\* *Leo.*

Vln. I

Vln. II

Vla.

Vc.

D.B.

Detailed description: This page of a musical score, page 9, contains measures 29 and 30. The score is for a full orchestra and a vocal soloist. The instruments listed on the left are Horn (Hn.), Vibraphone (Vib.), Trombone (T.B.), Clarinet (Chm.), F. Cymbal (F. Cym.), T. Tom (T.T.), B. Drum (B. Dr.), Timpani (Timp.), Soprano (S), Piano (Pno.), Violin I (Vln. I), Violin II (Vln. II), Viola (Vla.), Violoncello (Vc.), and Double Bass (D.B.). The vocal line features a vocalization 'ah' in measure 29. The piano part includes a section marked *8va* (octave up) and a section marked *Leo.* (Lento). Dynamics include *mp*, *p*, *mf*, and *f*. The score is written in a key signature of three flats and a common time signature.

31

Hn. *p* *mf*

Vib. *mf*

T.B.

Chm.

F. Cym.

T.T. *f*

B. Dr. *f*

Timp.

S *mf*  
ah

(8<sup>va</sup>)

Pno. *mf*  
\* Ped.

Vln. I *mf*

Vln. II *mf*

Vla. *mf*

Vc. *mf*

D.B. *mf*

This page of the musical score covers measures 33 and 34. The instruments and their parts are as follows:

- Hn. (Horn):** Measures 33-34 with a melodic line, ending with a *p* dynamic marking.
- Vib. (Vibraphone):** Measures 33-34 with a rhythmic pattern of eighth notes, ending with a *f* dynamic marking.
- T.B. (Trumpet B3):** Measures 33-34 with a sustained chord, ending with a *f* dynamic marking.
- Chm. (Chimes):** Measures 33-34 with a sustained chord, ending with a *f* dynamic marking.
- F. Cym. (F. Cymbal):** Measures 33-34 with a rhythmic pattern, ending with a *f* dynamic marking.
- T.T. (T. Tom):** Measures 33-34 with a rhythmic pattern, ending with a *f* dynamic marking.
- B. Dr. (B. Drum):** Measures 33-34 with a rhythmic pattern, ending with a *f* dynamic marking.
- Timp. (Tympani):** Measures 33-34 with a rhythmic pattern, ending with a *mf* dynamic marking.
- S. (Soprano):** Measures 33-34 with a vocal line, including the syllable "ah".
- Pno. (Piano):** Measures 33-34 with a complex rhythmic accompaniment, including a section marked *8va* and a section marked *21* with *8va*.
- Vln. I (Violin I):** Measures 33-34 with a melodic line, ending with a *f* dynamic marking.
- Vln. II (Violin II):** Measures 33-34 with a melodic line, ending with a *f* dynamic marking.
- Vla. (Viola):** Measures 33-34 with a sustained chord, ending with a *f* dynamic marking.
- Vc. (Violoncello):** Measures 33-34 with a sustained chord, ending with a *f* dynamic marking.
- D.B. (Double Bass):** Measures 33-34 with a sustained chord, ending with a *f* dynamic marking.

The score includes various musical notations such as dynamics (*p*, *f*, *mf*), articulation marks, and performance instructions like *8va* and *21*.



38 *rit. - - -*

Hn. *p*

Vib.

T.B.

Chm.

F. Cym.

T.T.

B. Dr.

Timp. *mute it!*

S

Pno. *dim.*

Vln. I

Vln. II

Vla.

Vc.

D.B.

Detailed description of the musical score: The score is for page 13 of 'A Psychotic's World Reading'. It begins at measure 38. The key signature has three flats (B-flat, E-flat, A-flat). The time signature is 3/4. The Horn part starts with a whole note, followed by a dynamic marking of *p*. The Vibraphone part has a melodic line with triplets. The Trombone part has a rhythmic accompaniment with triplets. The Chimes part is silent. The F. Cym., T.T., B. Dr., and Timp. parts have rhythmic patterns with dynamic markings of *ff*, *mf*, and *f*. The Timp. part has a *mute it!* instruction. The Piano part has a complex texture with triplets and a *dim.* instruction. The string parts (Vln. I, Vln. II, Vla., Vc., D.B.) have a rhythmic accompaniment with dynamic markings of *ff*, *mf*, and *f*.

41

Hn.

Vib.

T.B.

Chm.

F. Cym.

T.T.

B. Dr.

Timp.

S

8va

41

*mp*

*sf*

Led. \* Led. \* Led. \* Led. \* Led.

41

Vln. I

Vln. II

Vla.

Vc.

D.B.



45

Hn. *mf*

Vib. *mf*

T.B. *mf*

Chm.

F. Cym. *f*

T.T. *f*

B. Dr. *f*

Timp. *f*

S

Pno. *ff*

Vln. I *f* *mf* *morendo*

Vln. II *f* *mf* *morendo*

Vla. *f* *mf* *morendo*

Vc. *f* *mf* *morendo*

D.B. *f* *mf* *morendo*

\* *Ped.*

49

Hn.

Vib.

T.B.

Chm.

F. Cym.

T.T

B. Dr.

Timp.

S

Pno.

*cadenza*

*p*

*Leo.* \* *Leo.* \* *Leo.* \*

Vln. I

Vln. II

Vla.

Vc.

D.B.

56

Hn. *mf* *rit.*

Vib. *mf*

T.B. *p*

Chm.

F. Cym. *p*

T.T. *mf*

B. Dr. *mf*

Timp.

S

Pno. *ff*

Vln. I *f*

Vln. II *f*

Vla. *f*

Vc. *f*

D.B. *f*

*Leo.* \* *Leo.* \* *Leo.* \* *Leo.* \*

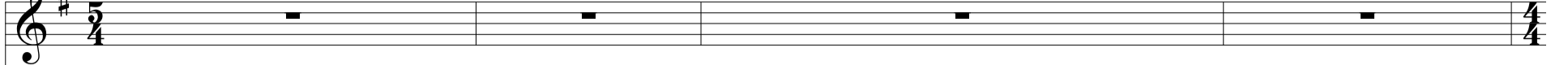


# A Psychotic's World Reading

## II. 凋零 The Withering

♩ = c.52

Horn in F



The square note head indicates that the note should be played with a bow, with no specific bowing technique required.

Vibraphone




Tubular Bells



Chimes



Finger Cymbals



Tam-tam



Bass Drum



Timpani

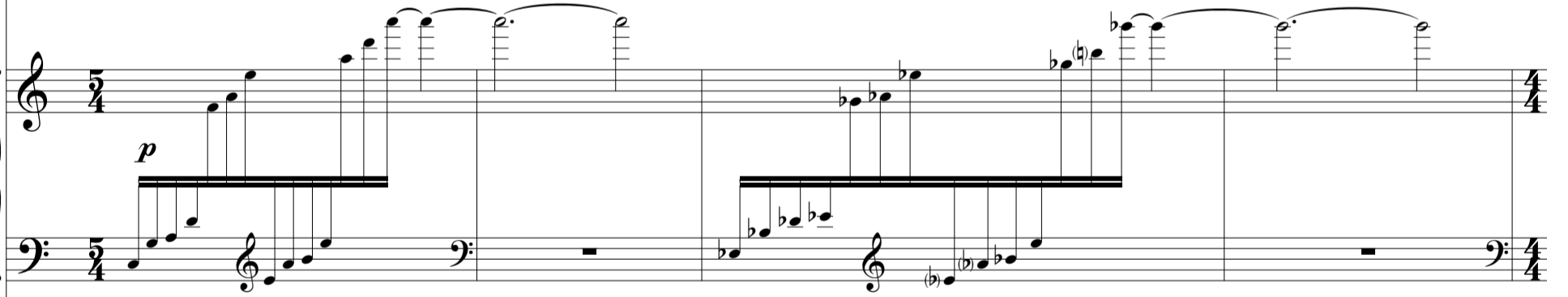


Cello Solo



Please play with a sense of mystery. The rhythm should not be too rigid; musicians should allow the rhythm to have some flexibility.

Piano




Violin I




Violin II



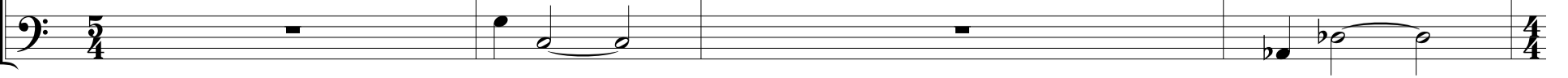
Viola



Cello



Double Bass



5

Hn. 4/4

Vib. 4/4 *mf* *pp*

T.B. 4/4

Chm. 4/4

F. Cym. 4/4 *p*

T.T. 4/4

B. Dr. 4/4

Timp. 4/4

Vc. 4/4

Pno. 4/4 *mp* *morendo* *p* 3

Vln. I 4/4 *mp* *morendo*

Vln. II 4/4 *mp* *morendo*

Vla. 4/4 *mp* *morendo*

Vc. 4/4 *mp* *morendo*

D.B. 4/4 *mp* *morendo*

♩ = c.72

11

Hn.

Vib.

T.B.

Chm.

F. Cym.

T.T.

B. Dr.

Timp.

Vc.

Pno.

Vln. I

Vln. II

Vla.

Vc.

D.B.

*mp*

*sf*

*pp*

*8<sup>va</sup>*

*solo*

*f*

*p* *f*

3





23

Hn.

Vib.

T.B.

Chm.

F. Cym.

T.T

B. Dr.

Timp.

Vc.

Pno.

Vln. I

Vln. II

Vla.

Vc.

D.B.

*mp*

*mp*

*mp*

*f*

♩ = c.64

29

Hn. *p*

Vib. *mp*

T.B.

Chm.

F. Cym. *p*

T.T.

B. Dr.

Timp.

Vc. *mp* *f* *mp*

Pno. *mp* *legato*

Vln. I

Vln. II

Vla.

Vc.

D.B.

33

Hn. *mf*

Vib.

T.B. *mp*

Chm.

F. Cym.

T.T.

B. Dr.

Timp.

Vc. *f mp mf f*

Pno. *mf*

Vln. I

Vln. II

Vla.

Vc.

D.B.



39 *rit.* *più mosso*

Hn.

Vib.

T.B.

Chm.

F. Cym.

T.T.

B. Dr.

Timp.

Vc.

Pno.

Vln. I

Vln. II

Vla.

Vc.

D.B.

*p* *mf* *f* *cresc.* *mf* *p* *p* *p*

7 12

This page of the musical score, titled "A Psychotic's World Reading", contains measures 41 through 44. The score is arranged for a full orchestra and includes the following parts:

- Hn. (Horn):** Remains silent throughout the measures.
- Vib. (Vibraphone):** Plays a rhythmic pattern of eighth notes with a complex, dissonant harmonic structure.
- T.B. (Trumpet B3):** Remains silent until measure 44, where it plays a sustained chord.
- Chm. (Chimes):** Remains silent throughout the measures.
- F. Cym. (F. Cymbal):** Remains silent throughout the measures.
- T.T. (T. Tom):** Plays a single note in measure 42, which is sustained into measure 43.
- B. Dr. (B. Drum):** Plays a single note in measure 42, which is sustained into measure 43.
- Timp. (Tympani):** Remains silent throughout the measures.
- Vc. (Violoncello):** Features a melodic line with triplets and a 7-measure rest in measure 44. The dynamic marking *mp* is present.
- Pno. (Piano):** Plays a complex, flowing melodic line with many sixteenth notes.
- Vln. I (Violin I):** Plays a simple melodic line.
- Vln. II (Violin II):** Plays a simple melodic line.
- Vla. (Viola):** Plays a simple melodic line.
- Vc. (Violone):** Plays a simple melodic line.
- D.B. (Double Bass):** Remains silent throughout the measures.

This page of the musical score covers measures 43 through 46. The instruments and their parts are as follows:

- Hn. (Horn):** Rests in all measures.
- Vib. (Vibraphone):** Measures 43-44 feature a melodic line with a tremolo effect. Measures 45-46 are rests.
- T.B. (Trumpet B3):** Rests in all measures.
- Chm. (Chimpanzee):** Rests in all measures.
- F. Cym. (F. Cymbal):** Rests in all measures.
- T.T. (T. Tom):** Rests in all measures.
- B. Dr. (B. Drum):** Rests in all measures.
- Timp. (Tympani):** Rests in all measures.
- Vc. (Violoncello):** Measures 43-44 feature a melodic line with a dynamic shift from *f* to *p*. Measures 45-46 are rests.
- Pno. (Piano):** Measures 43-44 feature a complex accompaniment with a dynamic shift from *f* to *p*. Measures 45-46 feature a *f* dynamic with sixteenth-note patterns and sixteenth-note chords.
- Vln. I (Violin I):** Measures 43-44 feature a melodic line. Measures 45-46 are rests.
- Vln. II (Violin II):** Measures 43-44 feature a melodic line. Measures 45-46 are rests.
- Vla. (Viola):** Measures 43-44 feature a melodic line. Measures 45-46 are rests.
- Vc. (Violoncello):** Measures 43-44 feature a melodic line. Measures 45-46 are rests.
- D.B. (Double Bass):** Measures 43-44 feature a melodic line. Measures 45-46 are rests.

47

Hn.

Vib. *mf*

T.B. *mf*

Chm.

F. Cym.

T.T.

B. Dr.

Timp.

Vc. *f*

Pno. *f*

Vln. I *f*

Vln. II *f*

Vla. *f*

Vc. *f*

D.B. *f*

7

3

7

12



This page of a musical score, titled "A Psychotic's World Reading" and numbered 13, contains measures 49 through 52. The score is arranged in a standard orchestral format with the following parts from top to bottom: Horn (Hn.), Vibraphone (Vib.), Trombone (T.B.), Chimes (Chm.), F. Cymbal (F. Cym.), Tom Tom (T.T.), Bass Drum (B. Dr.), Timpani (Timp.), Violin (Vc.), Piano (Pno.), Violin I (Vln. I), Violin II (Vln. II), Viola (Vla.), Violoncello (Vc.), and Double Bass (D.B.).

Measure 49 begins with a key signature of three flats (B-flat major or D-flat minor) and a common time signature. The Horn part has a whole rest. The Vibraphone part features a rhythmic pattern of eighth notes with a triplet of eighth notes in the second measure. The Trombone part has a whole rest, followed by a triplet of eighth notes in the second measure. The Chimes part has a whole rest. The F. Cym. part has a whole rest. The T.T. part has a half note with a fermata. The B. Dr. part has a half note with a fermata. The Timp. part has a whole rest. The Violin part has a melodic line with a triplet of eighth notes in the second measure. The Piano part has a complex melodic line in the right hand and a bass line in the left hand, with a forte (*f*) dynamic marking in the second measure. The Violin I and II parts have a melodic line with a triplet of eighth notes in the second measure. The Viola part has a half note. The Violoncello part has a half note. The Double Bass part has a half note.

Measure 50 continues the orchestration. The Horn part has a whole rest. The Vibraphone part has a rhythmic pattern of eighth notes. The Trombone part has a whole rest. The Chimes part has a whole rest. The F. Cym. part has a whole rest. The T.T. part has a whole rest. The B. Dr. part has a whole rest. The Timp. part has a whole rest. The Violin part has a melodic line. The Piano part has a complex melodic line. The Violin I and II parts have a melodic line. The Viola part has a half note. The Violoncello part has a half note. The Double Bass part has a half note.

Measure 51 continues the orchestration. The Horn part has a whole rest. The Vibraphone part has a rhythmic pattern of eighth notes. The Trombone part has a whole rest. The Chimes part has a whole rest. The F. Cym. part has a whole rest. The T.T. part has a whole rest. The B. Dr. part has a whole rest. The Timp. part has a whole rest. The Violin part has a melodic line. The Piano part has a complex melodic line. The Violin I and II parts have a melodic line. The Viola part has a half note. The Violoncello part has a half note. The Double Bass part has a half note.

Measure 52 concludes the page. The Horn part has a whole rest. The Vibraphone part has a rhythmic pattern of eighth notes. The Trombone part has a whole rest. The Chimes part has a whole rest. The F. Cym. part has a whole rest. The T.T. part has a whole rest. The B. Dr. part has a whole rest. The Timp. part has a whole rest. The Violin part has a melodic line. The Piano part has a complex melodic line. The Violin I and II parts have a melodic line. The Viola part has a half note. The Violoncello part has a half note. The Double Bass part has a half note.

*rit.*

51

Hn.

Musical staff for Horn (Hn.) in G major, showing rests for measures 51, 52, and 53.

Vib.

Musical staff for Vibraphone (Vib.) in G major, measure 51 features a sustained chord, measure 52 is a rest, and measure 53 features a melodic phrase starting with a *mf* dynamic.

T.B.

Musical staff for Trombone (T.B.) in G major, showing rests for measures 51, 52, and 53.

Chm.

Musical staff for Clarinet (Chm.) in G major, showing rests for measures 51, 52, and 53.

F. Cym.

Musical staff for F. Cym. in G major, showing rests for measures 51, 52, and 53.

T.T

Musical staff for T.T. in G major, showing rests for measures 51, 52, and 53.

B. Dr.

Musical staff for B. Dr. in G major, showing rests for measures 51, 52, and 53.

Timp.

Musical staff for Timp. in G major, showing rests for measures 51, 52, and 53.

Vc.

Musical staff for Violoncello (Vc.) in G major, 12/8 time signature. Measure 51 starts with a *p* dynamic, followed by a melodic line that transitions to *mf* in measure 53, which includes sixteenth-note triplets.

Pno.

Musical staff for Piano (Pno.) in G major, 12/8 time signature. Measure 51 features a complex texture with a sixteenth-note triplet in the right hand and a bass line. Measure 52 continues this texture. Measure 53 shows a transition to a *p* dynamic with a simplified texture.

Vln. I

Musical staff for Violin I (Vln. I) in G major, showing rests for measures 51, 52, and 53.

Vln. II

Musical staff for Violin II (Vln. II) in G major, showing rests for measures 51, 52, and 53.

Vla.

Musical staff for Viola (Vla.) in G major, showing rests for measures 51, 52, and 53.

Vc.

Musical staff for Violoncello (Vc.) in G major, showing a rhythmic accompaniment of quarter notes in measures 51 and 52, and a rest in measure 53.

D.B.

Musical staff for Double Bass (D.B.) in G major, showing a rhythmic accompaniment of quarter notes in measures 51 and 52, and a rest in measure 53.

54

Hn.

Vib.

T.B.

Chm.

F. Cym.

T.T

B. Dr.

Timp.

Vc.

Pno.

Vln. I

Vln. II

Vla.

Vc.

D.B.

57

Hn.

Vib.

T.B.

Chm.

F. Cym.

T.T

B. Dr.

Timp.

Vc.

Pno.

Vln. I

Vln. II

Vla.

Vc.

D.B.

*mp*

*f*

*f*

*p* *f*

*p* *f*

*f*

*ff*

*pp* *f*

*pp* *f*

*pp* *f*

*pp* *f*



66

Hn. *mf*

Vib.

T.B.

Chm.

F. Cym.

T.T

B. Dr.

Timp.

Vc. *mf*

Pno. *mp*

Vln. I *p* pizz.

Vln. II *p* pizz.

Vla. *mf*

Vc. *p* pizz.

D.B. *p* pizz.

70



74

Hn. *f*

Vib. *f* *p*

T.B. *f* *p*

Chm.

F. Cym.

T.T. *f*

B. Dr. *f*

Timp.

Vc. *f*

Pno. *ff*

Vln. I *f*

Vln. II *f*

Vla. *f* *mp*

Vc. *f* *mp*

D.B. *f* *mp*



This musical score page contains measures 78 through 81 for various instruments. The key signature is three flats (B-flat major or D-flat minor). The instruments and their parts are as follows:

- Hn. (Horn):** Measures 78-81 with a long melodic line starting on a half note and ending with a fermata.
- Vib. (Vibraphone):** Measures 78-81 with chords and a melodic line, starting with a forte (*f*) dynamic.
- T.B. (Trumpet B3):** Measures 78-81 with chords, starting with a forte (*f*) dynamic.
- Chm. (Chimes):** Measures 78-81 with a sustained chord.
- F. Cym. (F. Cymbal):** Measures 78-81 with rhythmic patterns.
- T.T. (T. Tom):** Measures 78-81 with rhythmic patterns.
- B. Dr. (B. Drum):** Measures 78-81 with rhythmic patterns.
- Timp. (Tympani):** Measures 78-81 with a sustained chord.
- Vc. (Violoncello):** Measures 78-81 with a melodic line, including a fortissimo (*ff*) section in measure 80.
- Pno. (Piano):** Measures 78-81 with chords and a melodic line, with dynamics *f* and *mf*.
- Vln. I (Violin I):** Measures 78-81 with a melodic line, with a *mf* dynamic in measure 80.
- Vln. II (Violin II):** Measures 78-81 with a melodic line, with a *mf* dynamic in measure 80.
- Vla. (Viola):** Measures 78-81 with a melodic line, with dynamics *f* and *mf*.
- Vc. (Violoncello):** Measures 78-81 with a melodic line, with dynamics *f* and *mf*.
- D.B. (Double Bass):** Measures 78-81 with a melodic line, with dynamics *f* and *mf*.

82

Hn.

Vib.

T.B.

Chm.

F. Cym.

T.T

B. Dr.

Timp.

Vc.

Pno.

Vln. I

Vln. II

Vla.

Vc.

D.B.

*mf*

*cadenza*

*ff*

86

Hn.

Vib.

T.B.

Chm.

F. Cym.

T.T

B. Dr.

Timp.

Vc.

Pno.

Vln. I

Vln. II

Vla.

Vc.

D.B.

*p*

*pp*

# A Psychotic's World Reading

## III. 众生相 (the Aspect of all sentient beings)

♩ = c.68

Each performer in the section should choose a note to sing in this chord, but the conductor must ensure that every note in the chord is assigned, and the volume of each note in the chord should be as balanced as possible. (all in Forte)

The score is arranged in a standard orchestral layout. The top section includes Horn in F, Vibraphone, Tubular Bells, Chimes, Finger Cymbals, Tam-tam, Bass Drum, and Timpani. The middle section features Piano (with a grand staff) and the bottom section includes Violin I, Violin II, Viola, Cello, and Double Bass. The music is in 5/4 time with a key signature of one sharp (F#). The vocal parts for Horn, Vibraphone, Tubular Bells, Chimes, Finger Cymbals, Tam-tam, Bass Drum, and Timpani are marked with the lyrics 'NA MO'. The Piano part has a specific instruction 'E-A-B-E' in a box above the first measure. The Vibraphone part has a 'mf' dynamic marking and a '6' (sixteenth notes) marking in the later measures. A box above the Vibraphone part in the fourth measure says 'Play in the conventional manner.' The score is divided into four measures, with a 4/4 time signature change at the end of the third measure.





*accel.*

**Hn.** *ff*  $\frac{2}{4}$

**Vib.** *ff*  $\frac{2}{4}$

**T.B.**  $\frac{2}{4}$

**Chm.**  $\frac{2}{4}$

**F. Cym.** *ff*  $\frac{2}{4}$

**T.T.** *ff*  $\frac{2}{4}$

**B. Dr.** *ff*  $\frac{2}{4}$

**Timp.** *ff*  $\frac{2}{4}$

**Pno.** *ff*  $\frac{2}{4}$

**Vln. I** *ff*  $\frac{2}{4}$

**Vln. II**  $\frac{2}{4}$

**Vla.**  $\frac{2}{4}$

**Vc.**  $\frac{2}{4}$

**D.B.**  $\frac{2}{4}$

♩ = c.108

14

Hn.

Vib.

T.B.

Chm.

F. Cym.

T.T.

B. Dr.

Timp.

Pno.

Vln. I

Vln. II

Vla.

Vc.

D.B.

*p*

*p*

*mf*

*p*

*mf*



This musical score page contains measures 20 through 26. The instruments and their parts are as follows:

- Hn. (Horn):** Rests in all measures.
- Vib. (Vibraphone):** Active in measures 20-26. Features triplet patterns and a *cresc.* marking.
- T.B. (Trumpet B3):** Rests in all measures.
- Chm. (Chimes):** Rests in all measures.
- F. Cym. (F. Cymbal):** Active in measures 20-26. Features a *cresc.* marking.
- T.T. (Tom Tom):** Rests in measures 20-25, then has a single note in measure 26 marked *mf*.
- B. Dr. (Bass Drum):** Active in measures 20-26. Features triplet patterns and a *cresc.* marking.
- Timp. (Tympani):** Active in measures 20-26. Features a *cresc.* marking.
- Pno. (Piano):** Active in measures 20-26. Features complex textures with triplets, sextuplets, and a *cresc.* marking.
- Vln. I (Violin I):** Rests in all measures.
- Vln. II (Violin II):** Rests in all measures.
- Vla. (Viola):** Rests in all measures.
- Vc. (Violoncello):** Rests in all measures.
- D.B. (Double Bass):** Rests in all measures.



32

Hn.

Vib.

T.B.

Chm.

F. Cym.

T.T

B. Dr.

Timp.

Pno.

Vln. I

Vln. II

Vla.

Vc.

D.B.

Detailed description of the musical score: This page contains measures 32 through 35 of a piece titled 'A Psychotic's World Reading'. The score is arranged in a standard orchestral format. The Horn (Hn.) part is mostly silent, indicated by rests. The Vibraphone (Vib.) plays a rhythmic pattern of chords. The Trombone (T.B.) has a melodic line. The Clarinet (Chm.) is silent. The F. Cymbal (F. Cym.) and T. Tom (T.T) parts feature specific rhythmic patterns. The B. Drum (B. Dr.) has a sustained pattern. The Timpani (Timp.) is silent. The Piano (Pno.) part is complex, with a fast, sixteenth-note melody in the right hand and sustained chords in the left hand. The Violin I (Vln. I) and Violin II (Vln. II) parts have melodic lines. The Viola (Vla.) part has a melodic line. The Violoncello (Vc.) and Double Bass (D.B.) parts have sustained notes.

35

Hn.

Vib.

T.B.

Chm.

F. Cym.

T.T

B. Dr.

Timp.

Pno.

Vln. I

Vln. II

Vla.

Vc.

D.B.

38

Hn.

Vib.

T.B.

Chm.

F. Cym.

T.T

B. Dr.

Timp.

Pno.

Vln. I

Vln. II

Vla.

Vc.

D.B.

*f*

*mp*

*p*

*fff*

*fff*

*p*

*mf*

*mp*

*p*

*mp*

*p*

*mp*

*p*

*mp*

*p*

*mp*

*p*

# A Psychotic's World Reading

## IV. 灿烂人生 Splendid Life

♩ = c.108

Horn in F

Vibraphone

Tubular Bells

Chimes

Finger Cymbals

Tam-tam

Bass Drum

Timpani

Piano

Violin I

Violin II

Viola

Cello

Double Bass



9 *meno mosso*

Hn.

Vib. *mp* *f* *mf*

T.B. *mp* *f*

Chm. *f*

F. Cym. *ff* *mf*

T.T. *ff*

B. Dr. *ff*

Timp. *ff*

Pno. *ff* *mp*

Vln. I *ff*

Vln. II *ff*

Vla. *ff*

Vc. *ff*

D.B. *ff*



14

Hn.

Vib.

T.B.

Chm.

F. Cym.

T.T.

B. Dr.

Timp.

Pno.

Vln. I

Vln. II

Vla.

Vc.

D.B.

*f*

*mp*

*cresc.*

*p*

*a tempo*

19

This page of the musical score contains measures 19 through 22. The score is written for a full orchestra and includes the following parts: Horn (Hn.), Vibraphone (Vib.), Trombone (T.B.), Chimes (Chm.), F. Cym. (F. Cym.), T. T. (T. T.), B. Dr. (B. Dr.), Timp. (Timp.), Pno. (Pno.), Vln. I (Vln. I), Vln. II (Vln. II), Vla. (Vla.), Vc. (Vc.), and D.B. (D.B.). The key signature is three flats (B-flat major or D-flat minor), and the time signature changes from 5/4 to 4/4 between measures 20 and 21. The dynamic markings are *f* (forte) and *mp* (mezzo-piano). The Pno. part features a complex melodic line in the right hand and a more rhythmic accompaniment in the left hand. The strings play a steady accompaniment, with the Vln. I, Vln. II, Vla., Vc., and D.B. parts all marked *f* in measure 19 and *mp* in measure 22. The T. T. and B. Dr. parts have a circled 'X' at the end of measure 22, indicating a specific performance instruction.

This musical score page contains measures 23 through 26. The score is for a full orchestra and includes the following parts: Horn (Hn.), Vibraphone (Vib.), Trombone (T.B.), Chimes (Chm.), F. Cym. (F. Cym.), T. T. (T. T.), B. Dr. (B. Dr.), Timp. (Timp.), Piano (Pno.), Violin I (Vln. I), Violin II (Vln. II), Viola (Vla.), Violoncello (Vc.), and Double Bass (D.B.).

The score begins at measure 23 with a key signature of three flats (B-flat, E-flat, A-flat) and a common time signature. The time signature changes to 5/4 at measure 24 and back to 4/4 at measure 25. Measure 26 is also in 4/4 time.

Dynamic markings are used throughout the score to indicate volume levels. For example, the Piano part starts with *fp* (fortissimo piano) in measure 23, moves to *f* (forte) in measure 24, and then has a crescendo from *mp* (mezzo-piano) to *f* in measure 26. Similar markings are present in the Violin I, Violin II, Viola, and Double Bass parts.

The score features various musical notations, including slurs, accents, and articulation marks. The Piano part has a complex texture with multiple voices in both hands, including a triplet in measure 26. The string parts (Violins, Viola, and Double Bass) play a rhythmic pattern of eighth notes, while the woodwinds and percussion provide harmonic support and rhythmic accents.

♩ = c.78

27

Hn. *mf*

Vib. *mp* *f* *mp*

T.B. *mp* *f*

Chm. *f*

F. Cym. *ff*

T.T. *p* *ff*

B. Dr. *p* *ff*

Timp.

Pno. *mp* *ff*

Vln. I *mp* *ff* *mp*

Vln. II *mp* *ff* *mp*

Vla. *mp* *ff* *mp*

Vc. *mp* *ff* *mp*

D.B. *mp* *ff* *mp*

Hn. *31* *p* *f* *mf*

Vib. *31*

T.B.

Chm.

F. Cym. *31* *mp*

T.T. *pp*

B. Dr. *31*

Timp. *31*

Pno. *31*

Vln. I *31* *mf* *mp*

Vln. II *31* *mf* *mp*

Vla. *31* *mf* *mp*

Vc. *31* *mf* *mp*

D.B. *31* *mf* *mp*

36 *meno mosso*  
Hn. *f* *mp*

36 *f* *p*  
Vib.

T.B.

Chm.

36  
F. Cym.

T.T.

36  
B. Dr.

36  
Timp.

36 *legato*  
Pno. *pp*

36 *f* *p*  
Vln. I

36 *f* *p*  
Vln. II

36 *f* *p*  
Vla.

36 *f* *p*  
Vc.

36 *f* *p*  
D.B.

*accel.*

This musical score page covers measures 41 to 45. The instruments listed on the left are Horn (Hn.), Vibraphone (Vib.), Trombone (T.B.), Chimes (Chm.), F. Cym., T. T., B. Dr., Timp., Piano (Pno.), Violin I (Vln. I), Violin II (Vln. II), Viola (Vla.), Violoncello (Vc.), and Double Bass (D.B.).

Measures 41-45 are marked with a *41* above the first staff. The key signature is three flats (B-flat major or D-flat minor). The score includes dynamic markings such as *f* (forte) and *accel.* (accelerando). The Piano part features complex textures with triplets in measures 44 and 45. The Vibraphone part has a melodic line with a crescendo leading to *f* in measure 45. The Horn, Trombone, Chimes, F. Cym., T. T., B. Dr., Timp., Violin I, Violin II, Viola, Violoncello, and Double Bass parts are mostly silent, indicated by rests.

♩ = c.108

This page of a musical score contains measures 46 through 50. The score is for a full orchestra and piano. The key signature is three flats (B-flat, E-flat, A-flat), and the time signature changes from 2/4 to 5/4 and back to 4/4. The instruments and their parts are as follows:

- Hn. (Horn):** Rests in measures 46-50.
- Vib. (Vibraphone):** Active in measures 46-50, featuring a triplet in measure 46 and a dynamic range from *ff* to *f*.
- T.B. (Trumpet B3):** Active in measures 46-50, with dynamics *ff* and *f*.
- Chm. (Chimes):** Rests in measures 46-50.
- F. Cym. (F. Cymbal):** Rests in measures 46-50.
- T.T. (Tom Tom):** Active in measures 46-50, with dynamics *f* and *ff*.
- B. Dr. (Bass Drum):** Active in measures 46-50, with dynamics *f* and *ff*.
- Timp. (Timpani):** Active in measures 46-50, with dynamics *f* and *ff*.
- Pno. (Piano):** Active in measures 46-50, featuring a triplet in measure 46 and dynamics *ff* and *f*.
- Vln. I (Violin I):** Active in measures 46-50, with dynamics *f* and *ff*.
- Vln. II (Violin II):** Active in measures 46-50, with dynamics *f* and *ff*.
- Vla. (Viola):** Active in measures 46-50, with dynamics *f* and *ff*.
- Vc. (Violoncello):** Active in measures 46-50, with dynamics *f* and *ff*.
- D.B. (Double Bass):** Active in measures 46-50, with dynamics *f* and *ff*.



50

Hn.

Vib.

T.B.

Chm.

F. Cym.

T.T.

B. Dr.

Timp.

Pno.

Vln. I

Vln. II

Vla.

Vc.

D.B.

*mp*

*fp*

*f*

3

5/4

4/4



This musical score page, numbered 14, is titled "A Psychotic's World Reading". It features a full orchestral arrangement with the following instruments and parts:

- Hn. (Horn):** Treble clef, starting at measure 58. Dynamics include *cresc.*, *rit.*, and *ff*. Tempo markings include *a tempo*.
- Vib. (Vibraphone):** Treble clef, starting at measure 58. Features triplet patterns. Dynamics include *cresc.* and *ff*.
- T.B. (Trombone):** Treble clef, starting at measure 58. Dynamics include *cresc.* and *ff*.
- Chm. (Chimes):** Treble clef, starting at measure 58. Dynamics include *cresc.*.
- F. Cym. (F. Cymbal):** Percussion, starting at measure 58. Dynamics include *cresc.* and *ff*.
- T.T. (Tom-tom):** Percussion, starting at measure 58. Dynamics include *cresc.* and *ff*.
- B. Dr. (Snare Drum):** Percussion, starting at measure 58. Dynamics include *cresc.*, *ff*, and *fff*.
- Timp. (Timpani):** Bass clef, starting at measure 58. Dynamics include *cresc.* and *ff*.
- Pno. (Piano):** Grand staff (treble and bass clefs), starting at measure 58. Features triplet patterns. Dynamics include *cresc.* and *ff*.
- Vln. I (Violin I):** Treble clef, starting at measure 58. Dynamics include *cresc.* and *ff*.
- Vln. II (Violin II):** Treble clef, starting at measure 58. Dynamics include *cresc.* and *ff*.
- Vla. (Viola):** Alto clef, starting at measure 58. Dynamics include *cresc.* and *ff*.
- Vc. (Violoncello):** Bass clef, starting at measure 58. Dynamics include *cresc.* and *ff*.
- D.B. (Double Bass):** Bass clef, starting at measure 58. Dynamics include *cresc.* and *ff*.